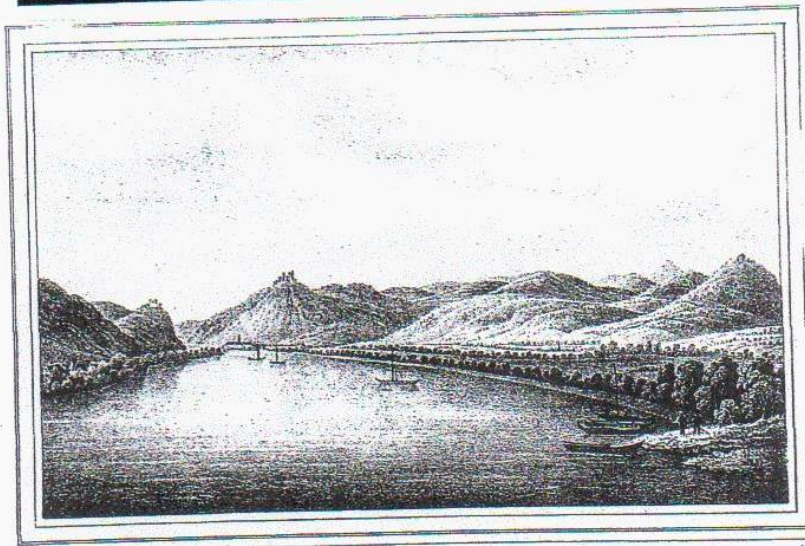
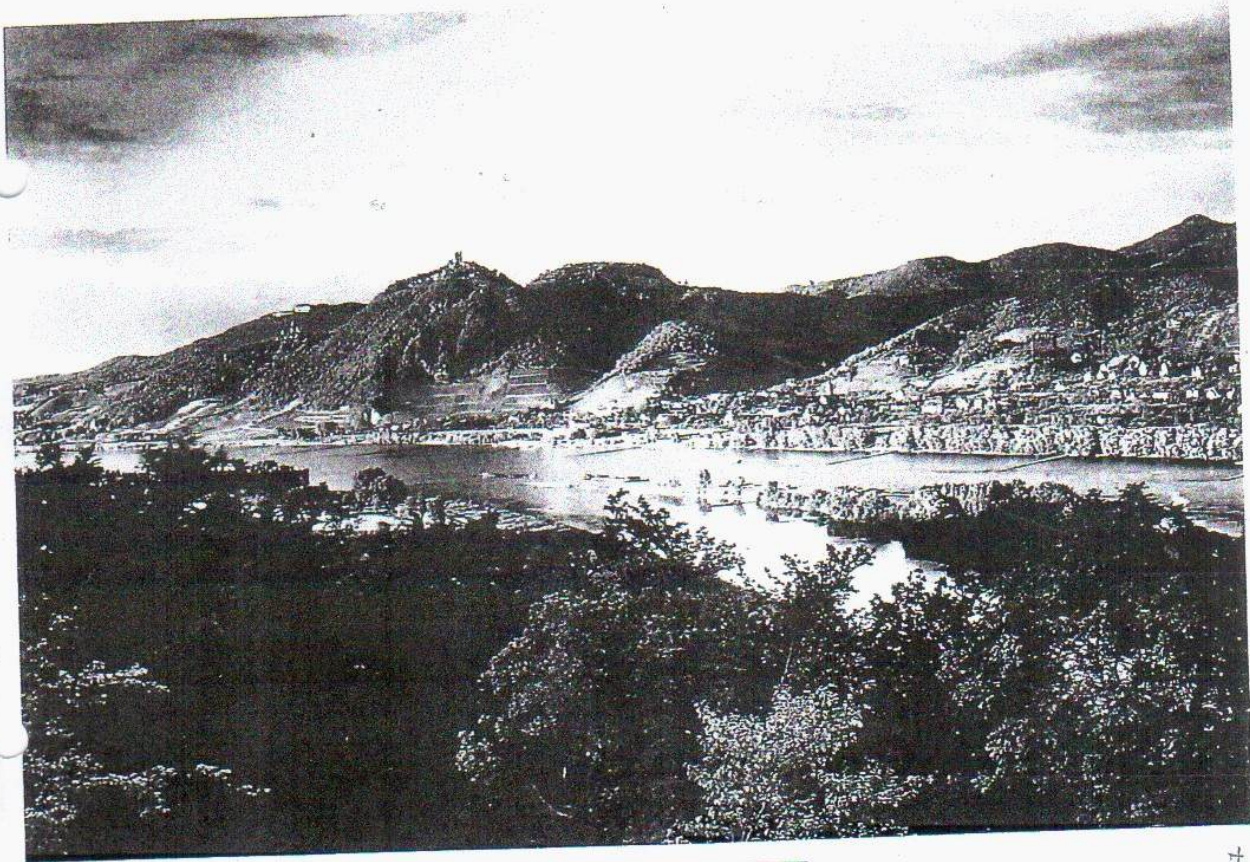


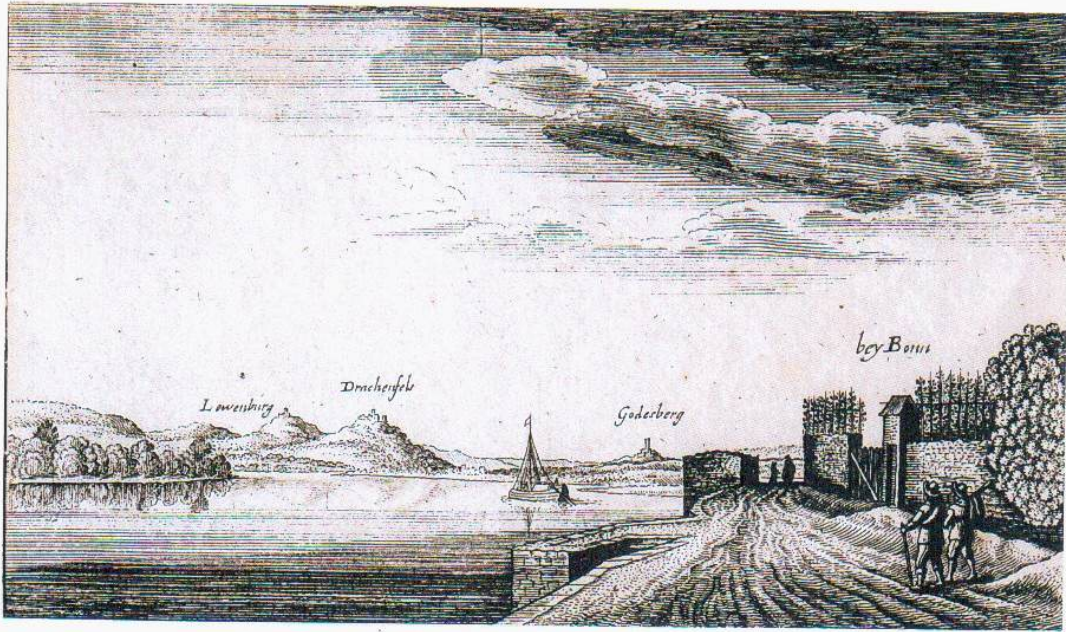
**Bilder und Fotografien
von 1830 bis 2016,
abfotografiert von Dr. Horst Ellgering**

Drachenfels



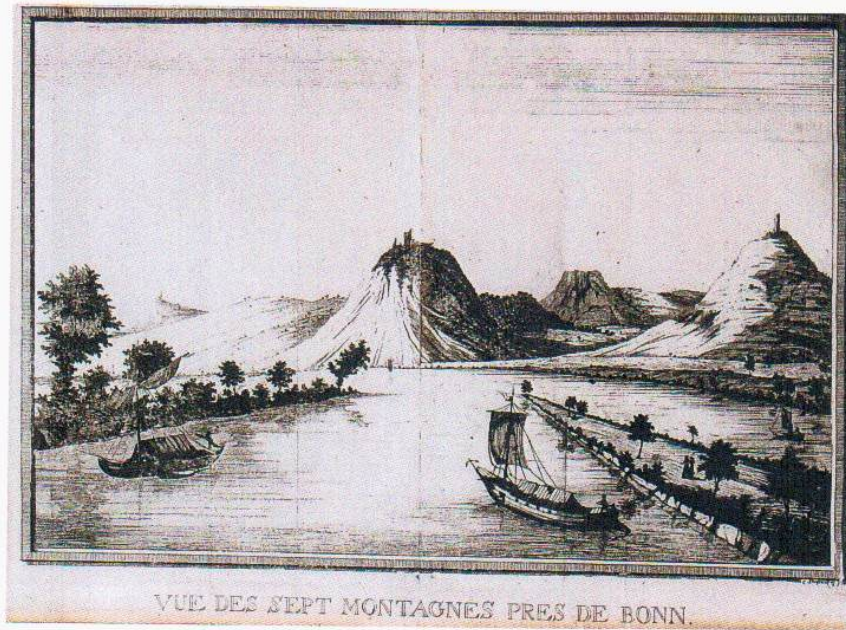
Das Siebengebirge.

1



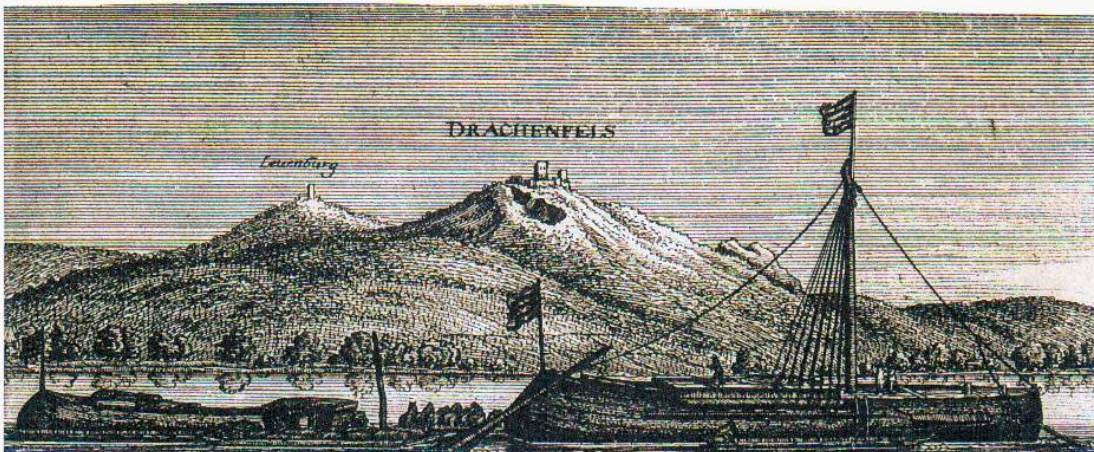
1635

2

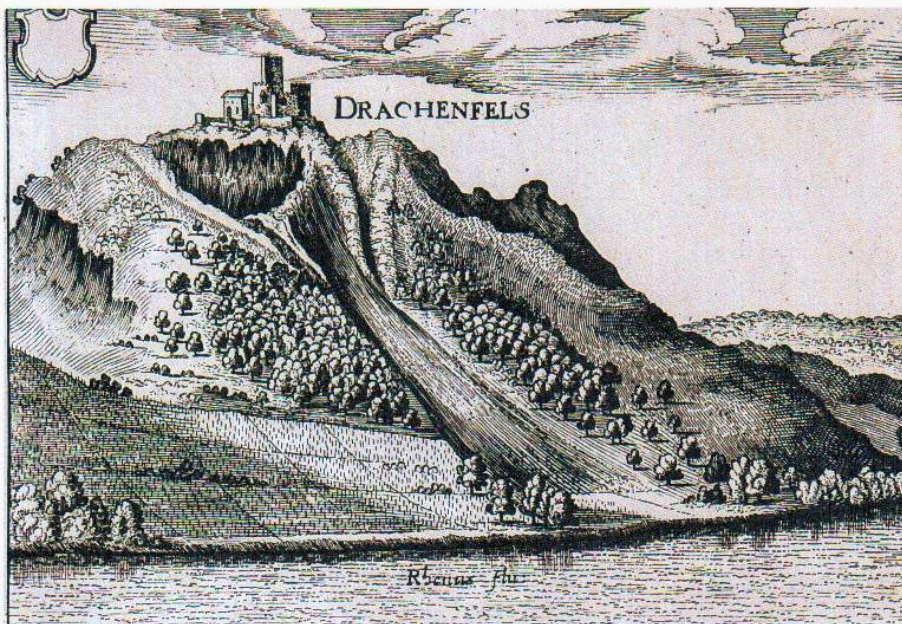


1791

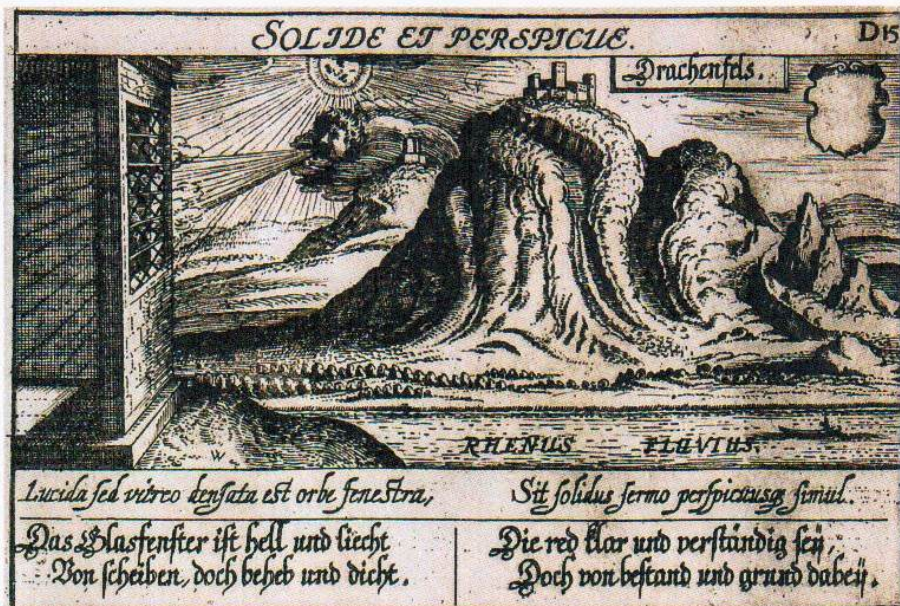
3



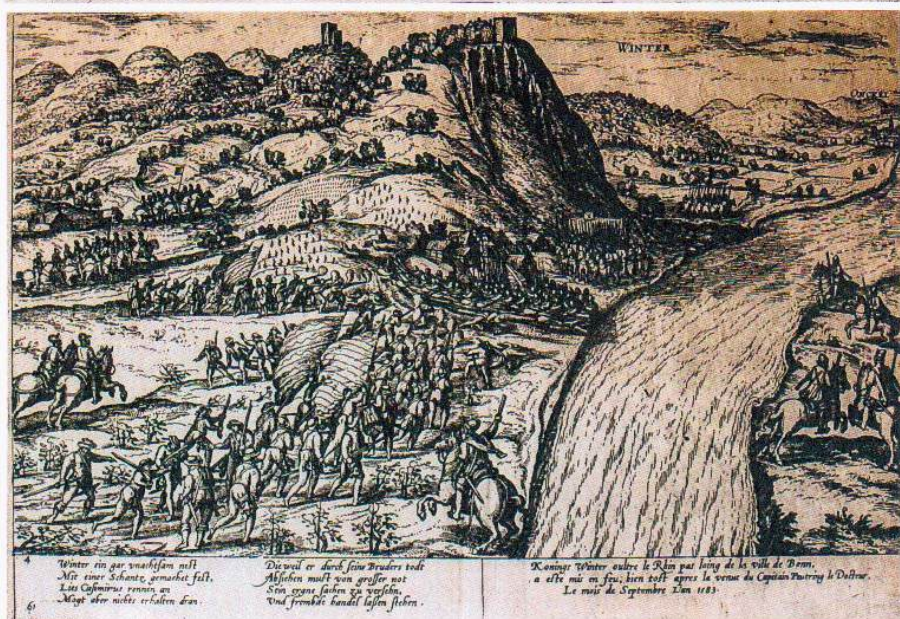
1635



1646



1670



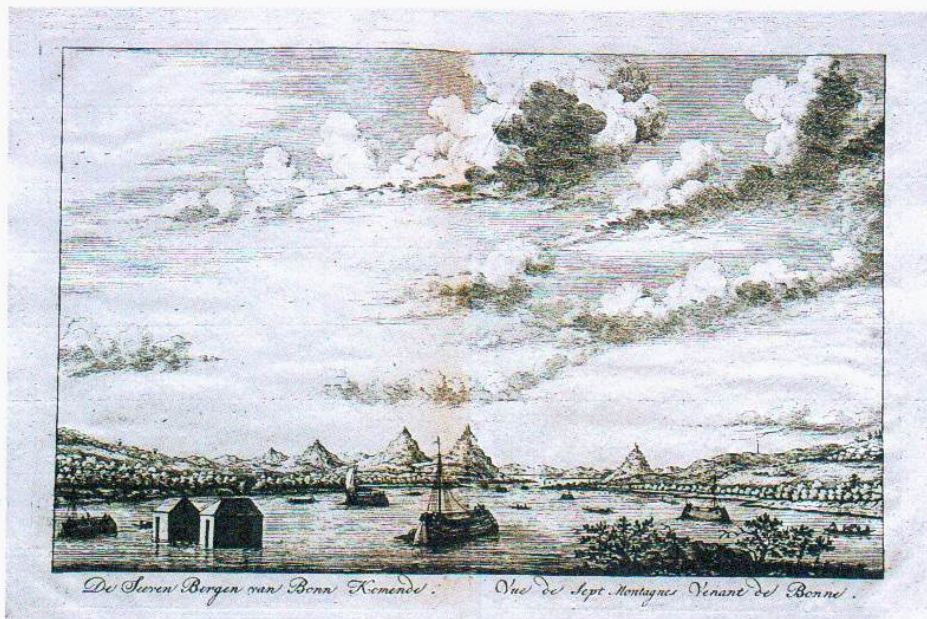
1689



1763



1763



1763

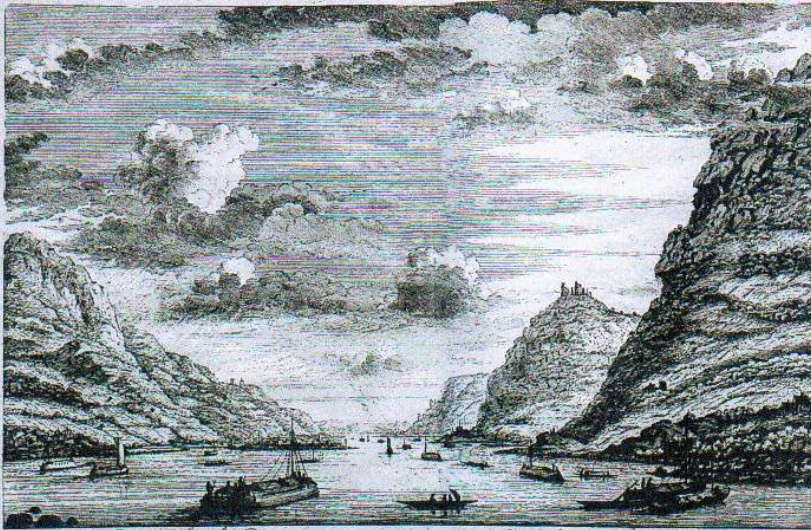
10



Draakenfels, en gäddeln der Seven Bergen. | Draakenfels, et une partie des sept montagnes

1763

11



Den Rhin by Bonn.

Le Rhin proche Bonn.

1763

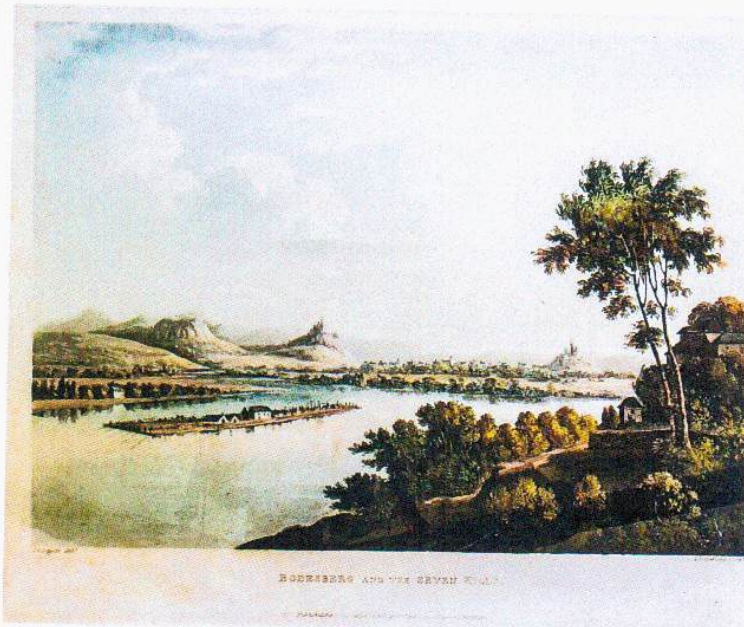
12

13



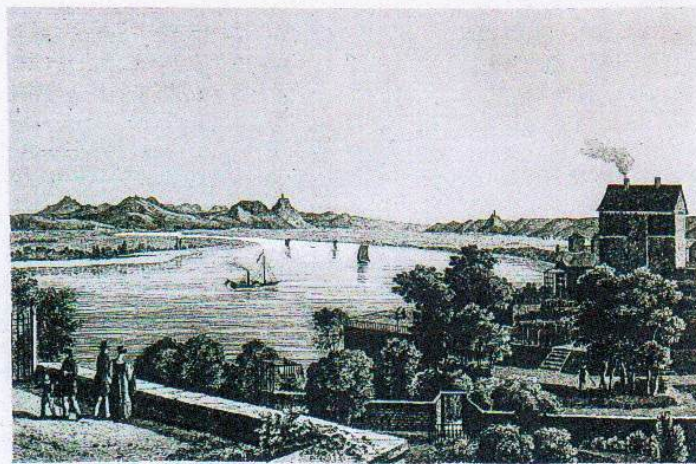
1750

14



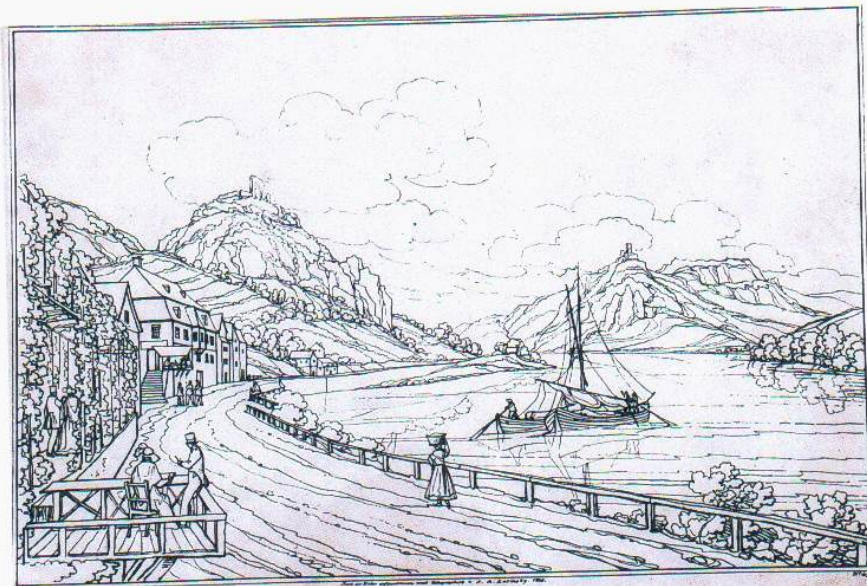
1820

15



1860

16

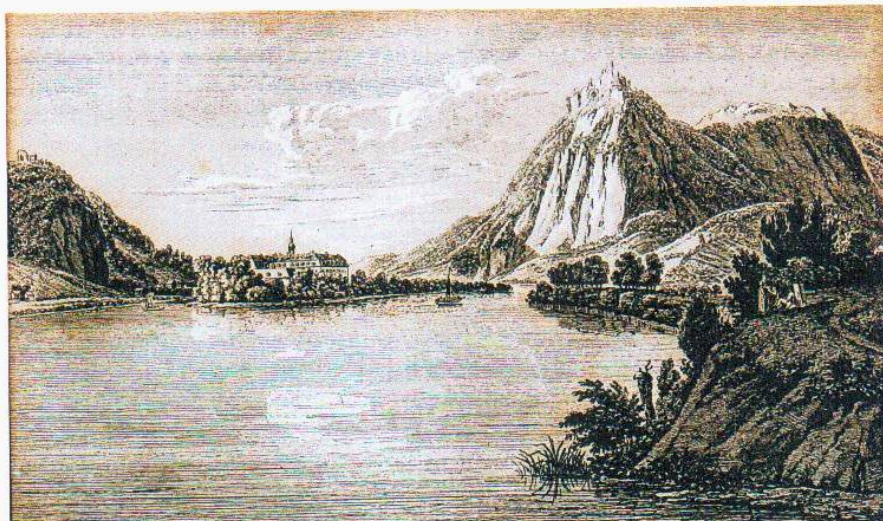


Rolandseeck und Drachenfels.

Rolandseeck et Drachenfels.

1828

17



Ansicht von Nonnenwerth.

Vue de Nonnenwerth.

1800

18



1840

19



DER RHEIN bei ROLANDBECK

1870

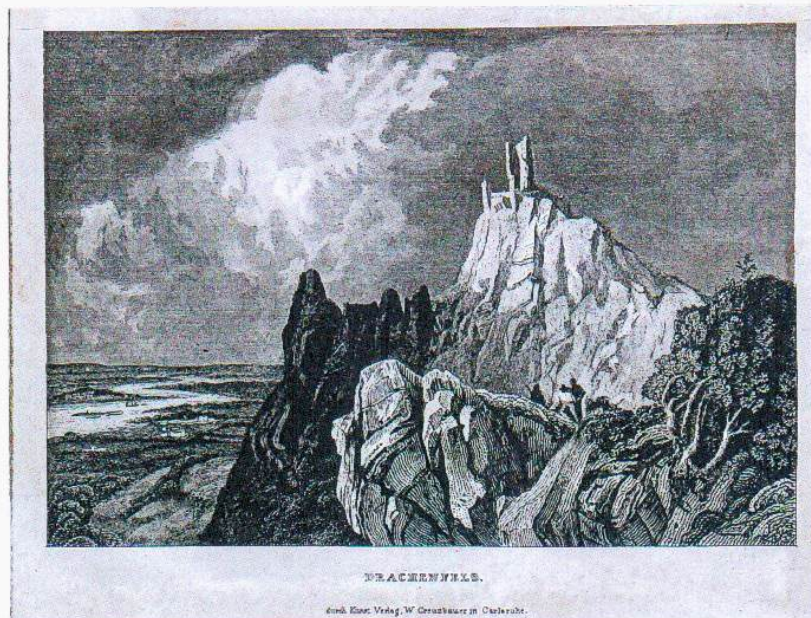
20



DRACHENFELS

1840

21

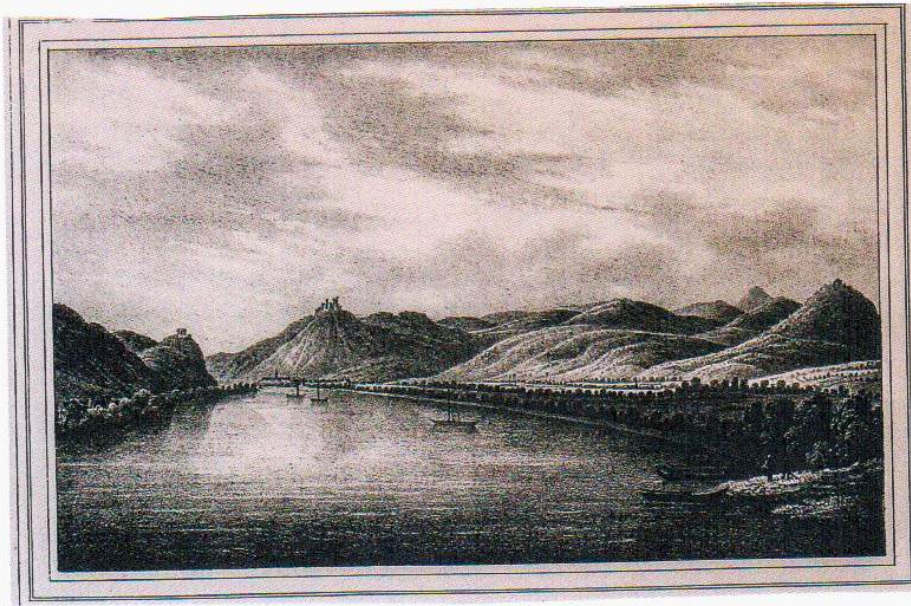


DRACHENFELS.

Österr. Kaiser. Verlag. W. Grunbauer in Charlotten.

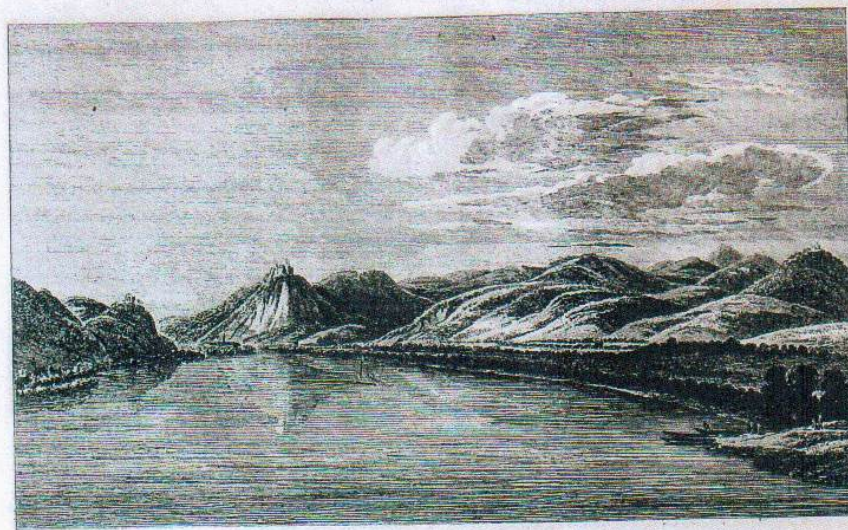
1840

22



1800

23



1800

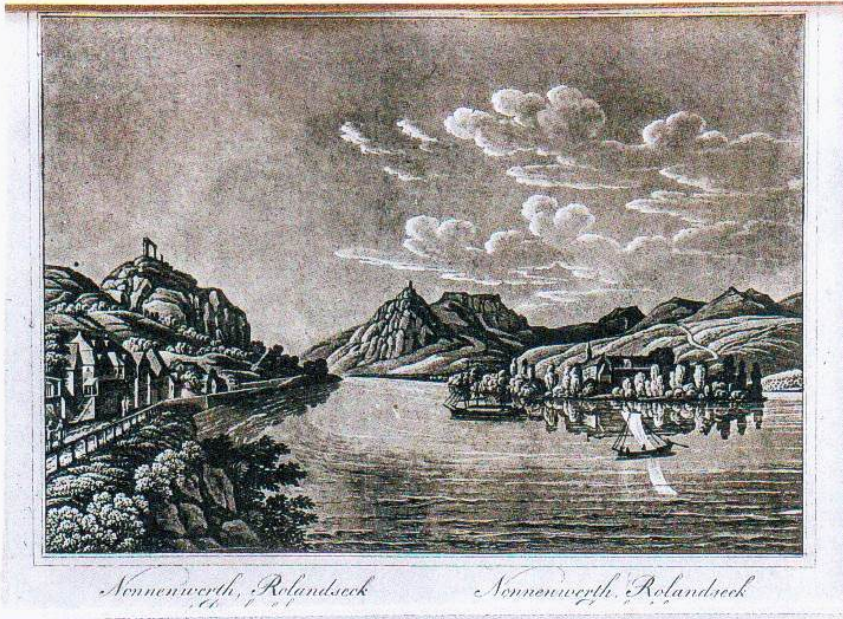
Ansicht der sieben Berge von der Löwenburg bis Drachenfels. Vue des sept. Montagnes depuis le chateau dit Löwenburg jusqu'a celui de Drachenfels.

24



1818

25



1840

Nonnenwerth, Rolandseck

Nonnenwerth, Rolandseck

26

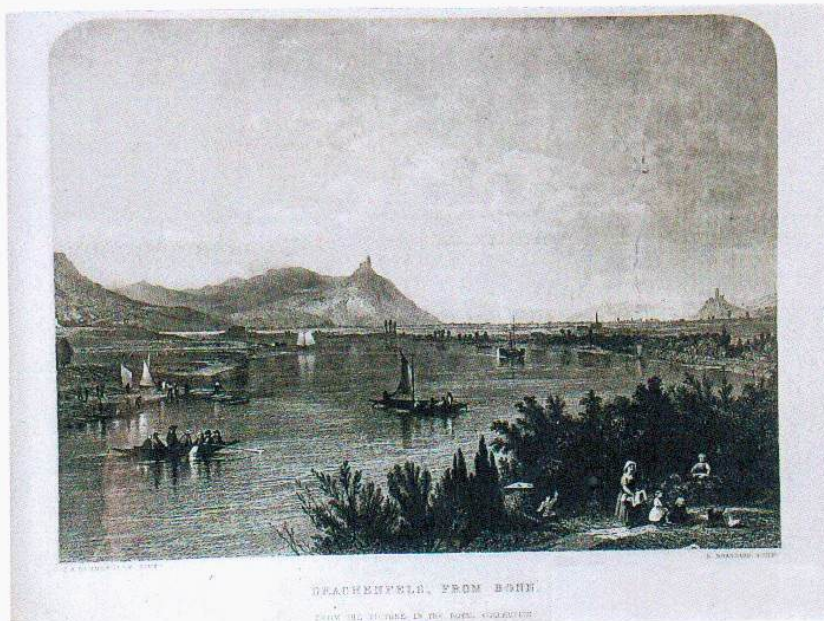


1870

Steine de Chateau de Drachenfels

Kloster des abbatres von Drachenfels

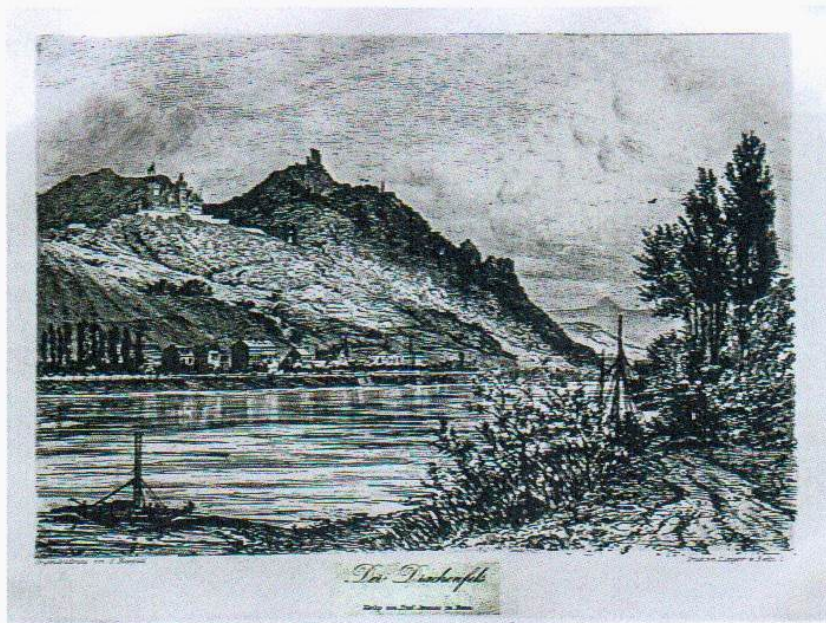
27



1840

DRACHENFELS, FROM BONN
FROM THE SCULPTURE IN THE ROYAL GALLERY

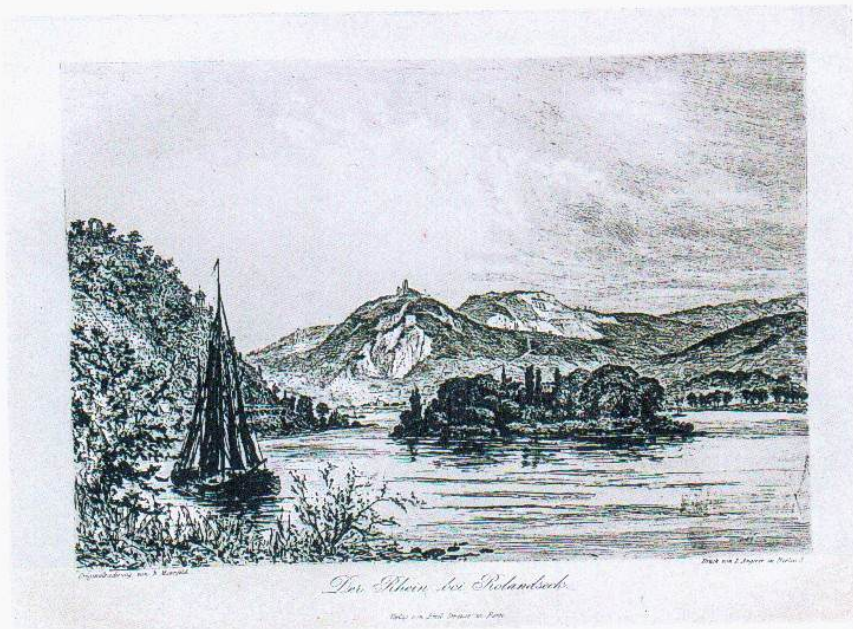
28



Der Drachenfels

1870

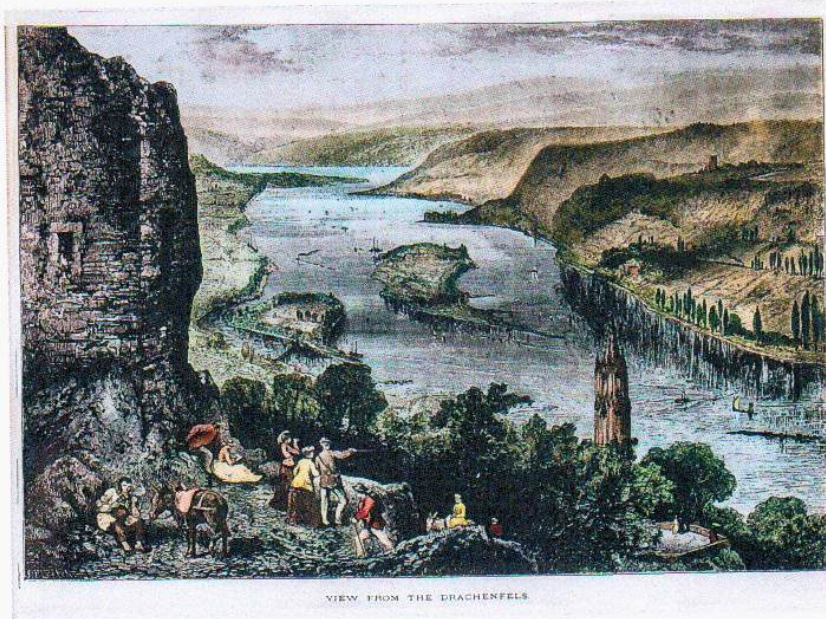
79



Der Rhein bei Bielefeld

1840

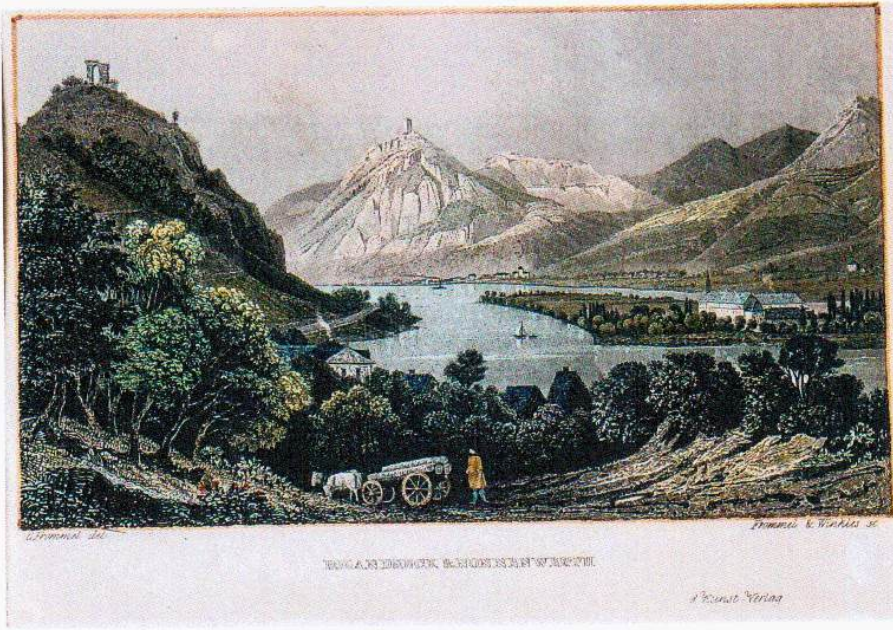
30



VIEW FROM THE DRACHENFELS

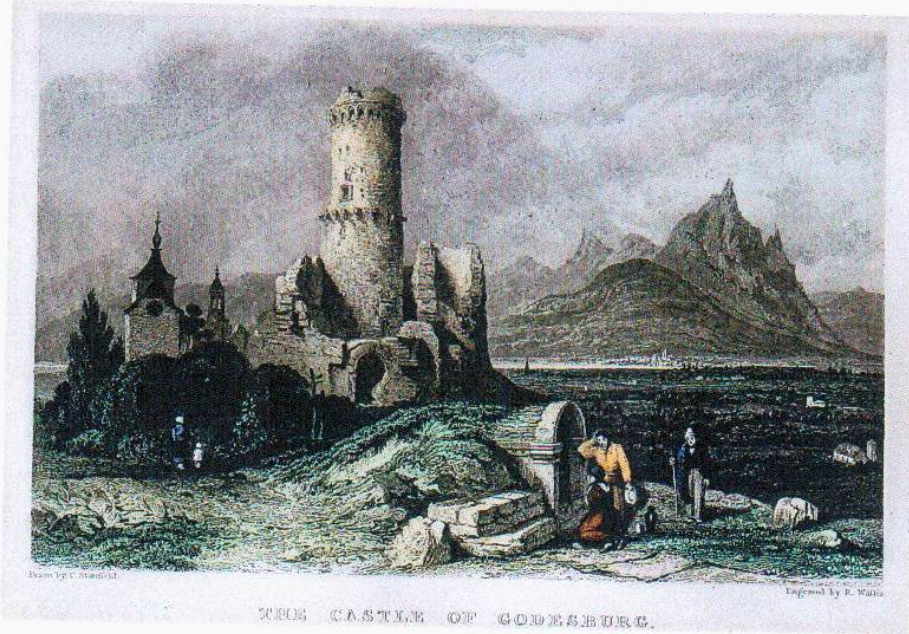
1880

37



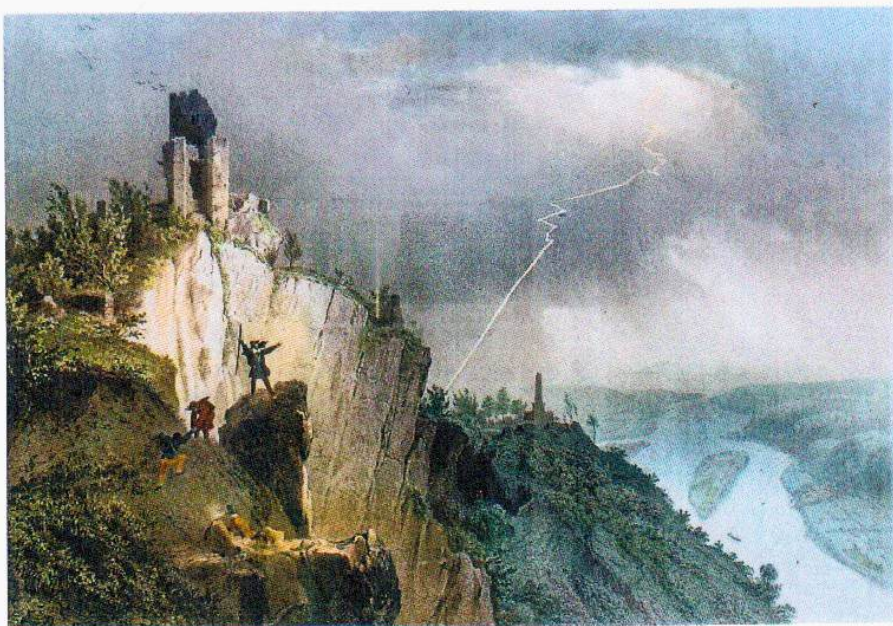
1850

37



1840

37



1840

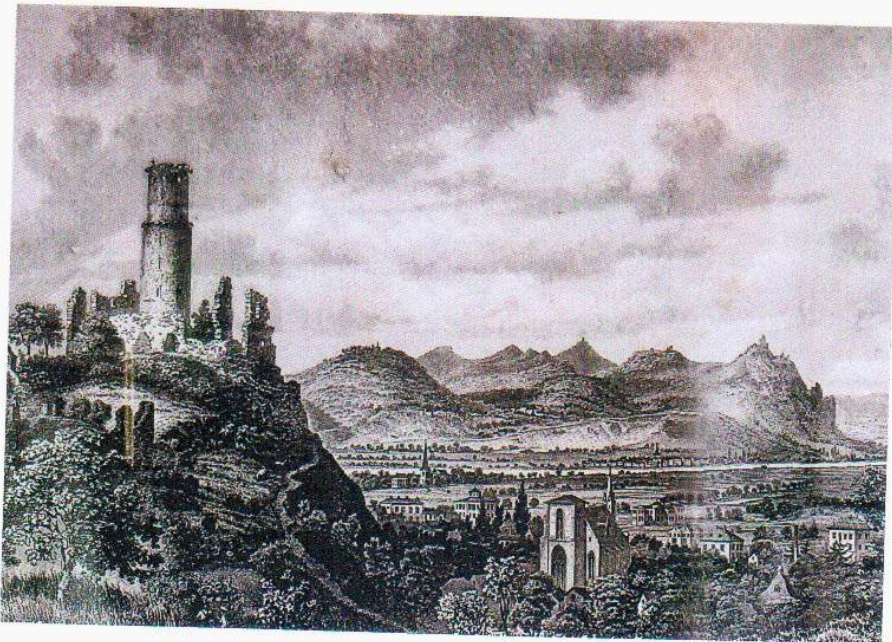
34



1840

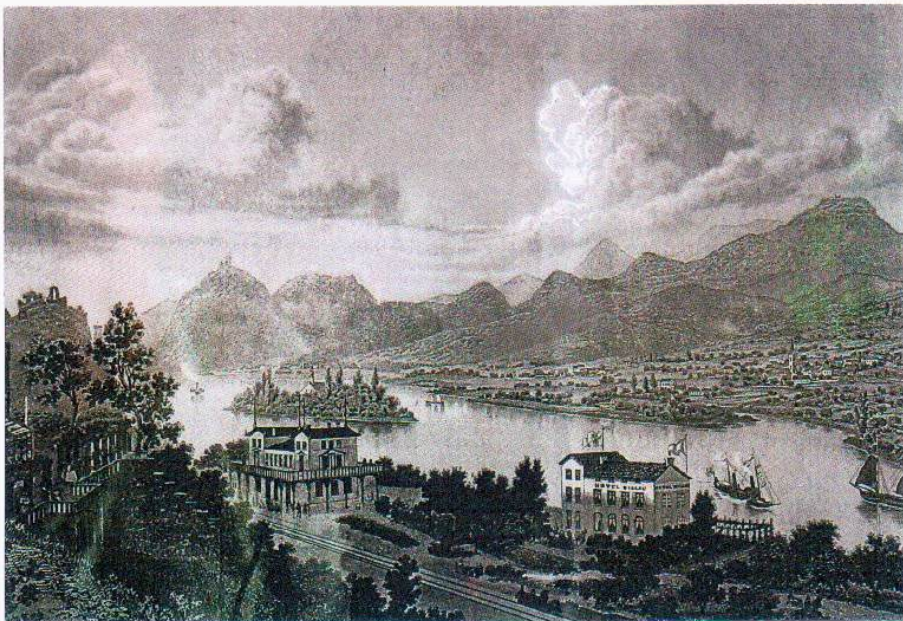
WOLLA STONECK DES AUCHSTADTENS UND TOTTENBYRKE
Druck v. Verlag v. J. B. Lange, in Darmstadt

35



1820

36



1820

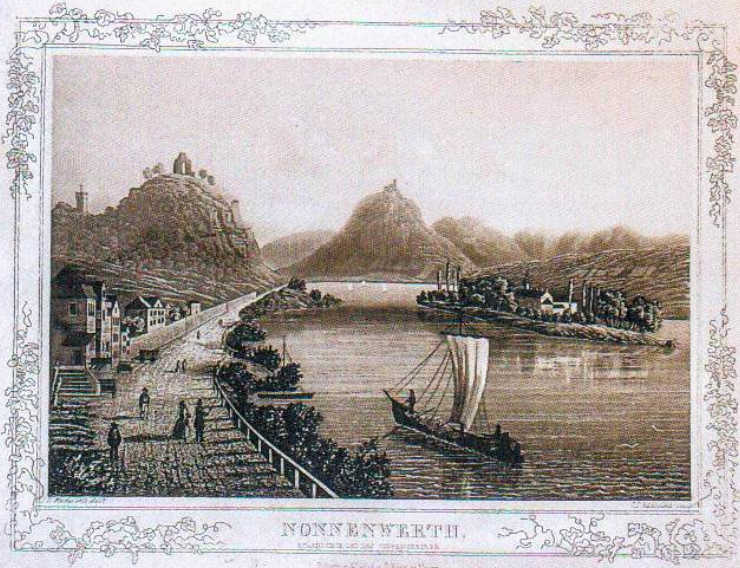
37



DEPVANT DE NONNENWERTH CONVENT OF NONNENWERTH & RUINS OF ROLANDBECK FRAUENKLOSTER VON NONNENWERTH
 ET RUINES DE ROLANDBECK UND MÄNNER VON ROLANDBECK
 Lith. Mack & Arnswang

1840

38



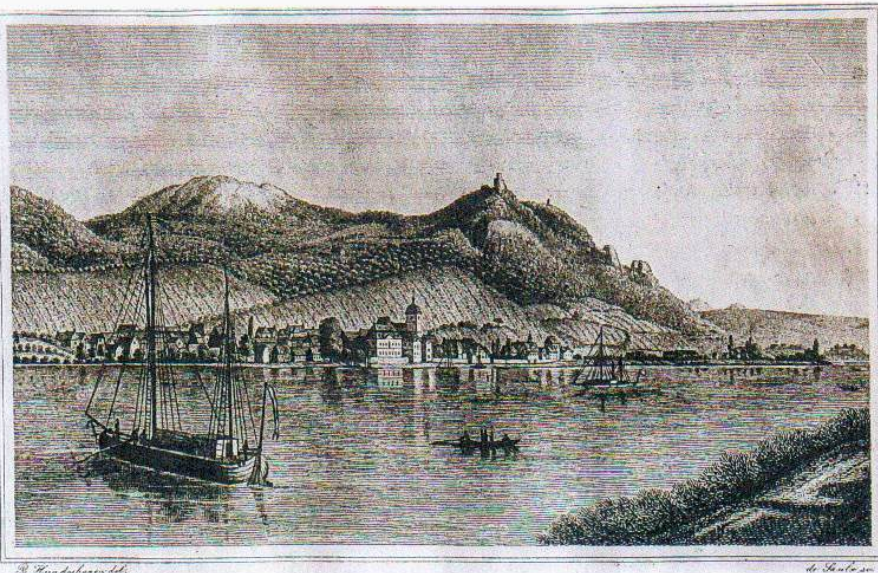
NONNENWERTH.
 Lith. Mack & Arnswang

38. 172

1840

1840

39

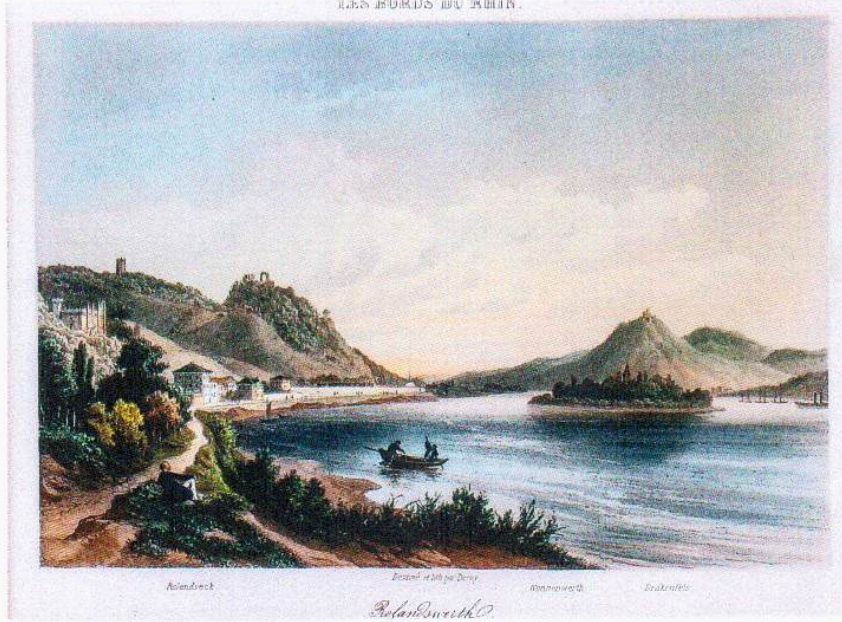


39. 173

1850

1850

40



1750

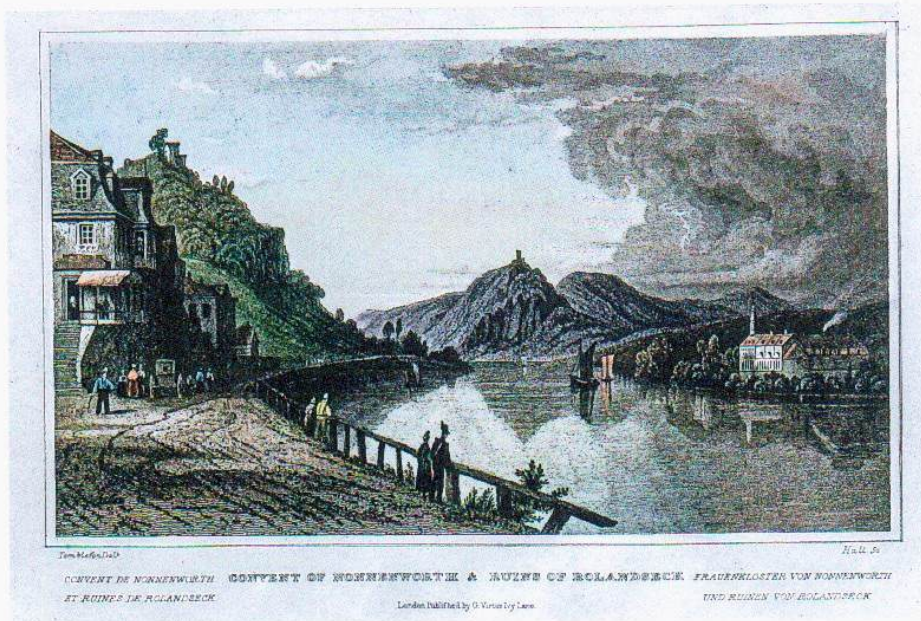
Reimsbruck Bessend et M. de Dancy Wonnegorth Brakenfels
Bolander'sche

41



1840

42



1840

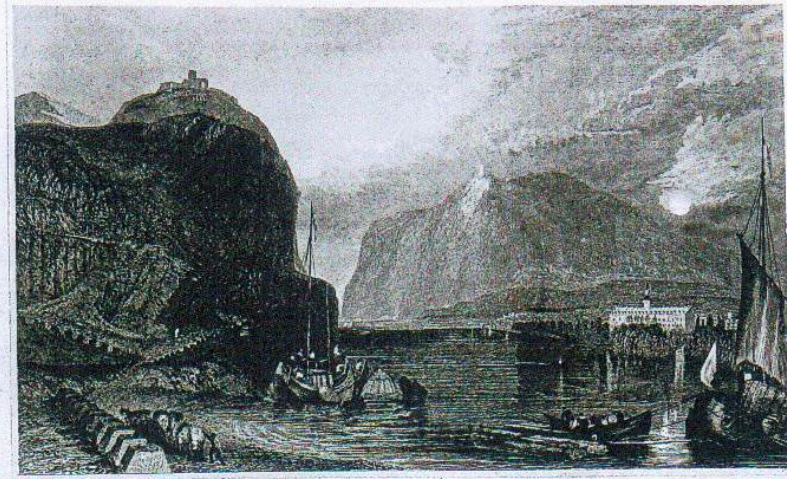
CONVENT DE NONNENWIRTH CONVENT OF NONNENWORTH & HOUSE OF ROLANDECKE. FRAUENKLOSTER VON NONNENWORTH
ST. ROINES DE ROLANDECKE
London, published by G. Virtue by Lewis. HALL 5
UND RUINEN VON ROLANDECKE

43



1840

44



DRACHENFELS am RHEIN

Aus A. Knorr's Kunst- u. Bildh. Gr. Inst. in Bonn.

Taschenbuch & Verleger

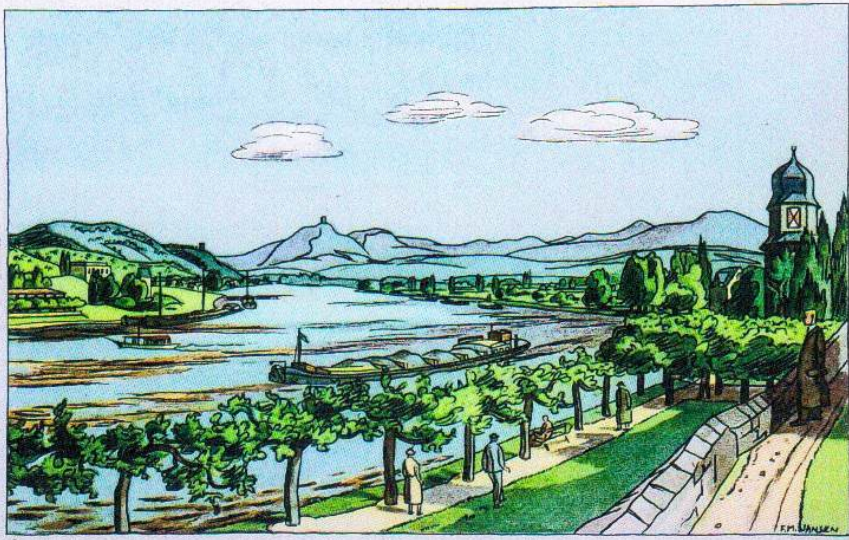
1850

45



1850

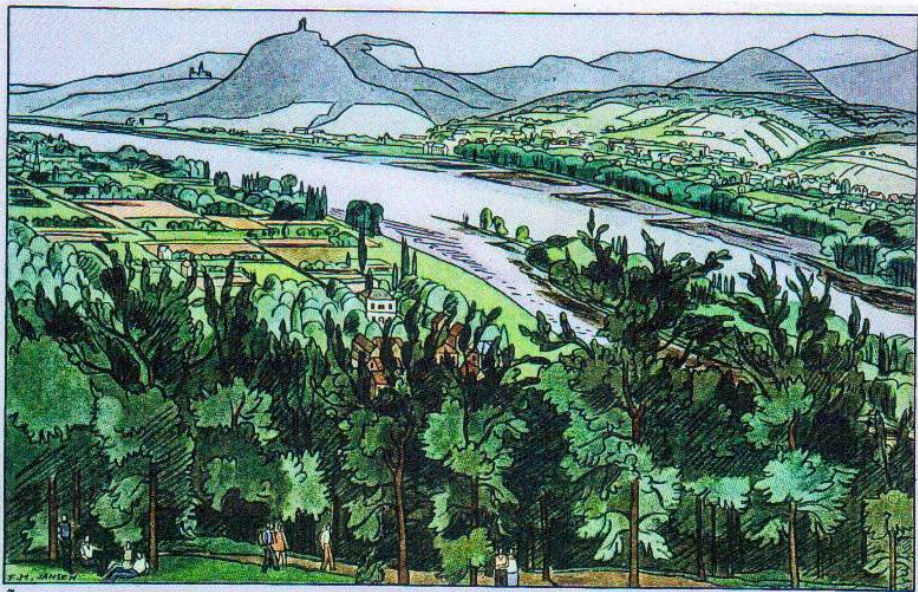
49



8

1941

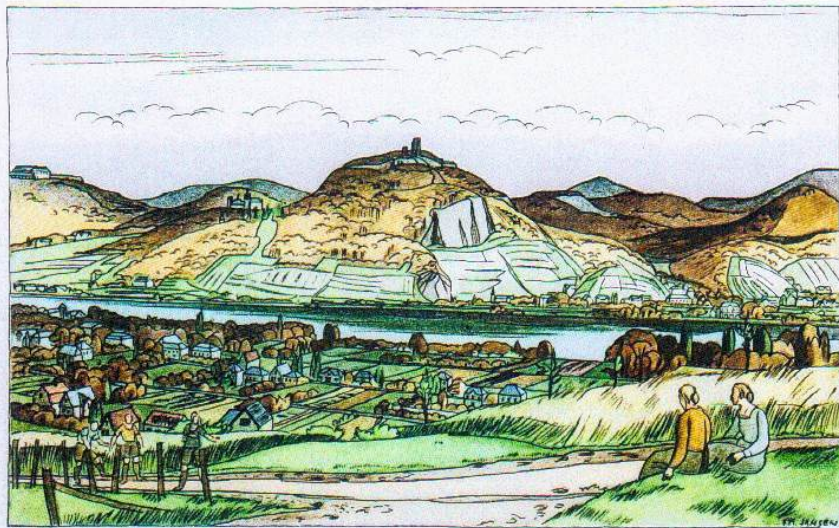
50



7

1941

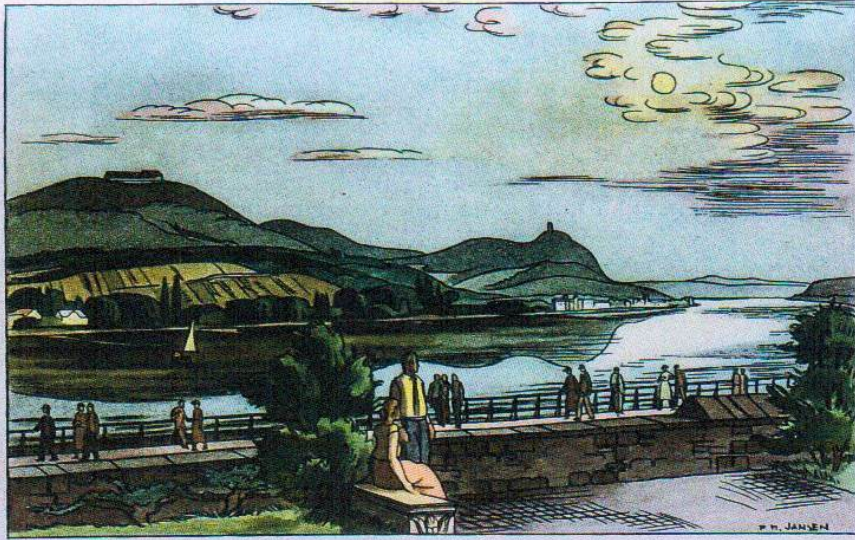
51



6

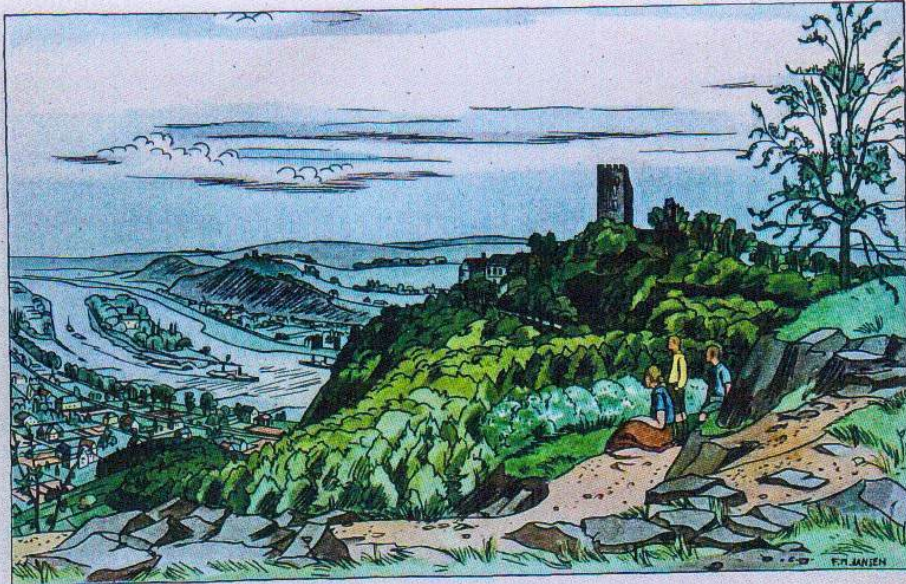
1941

52



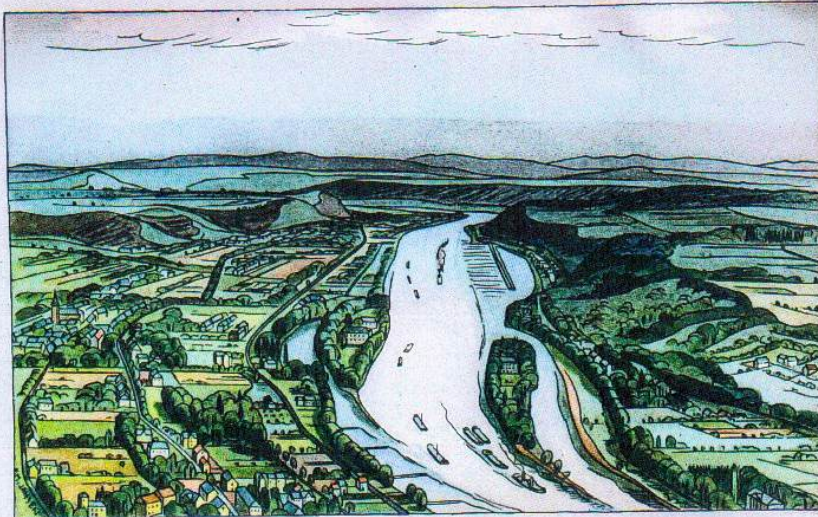
1941

53



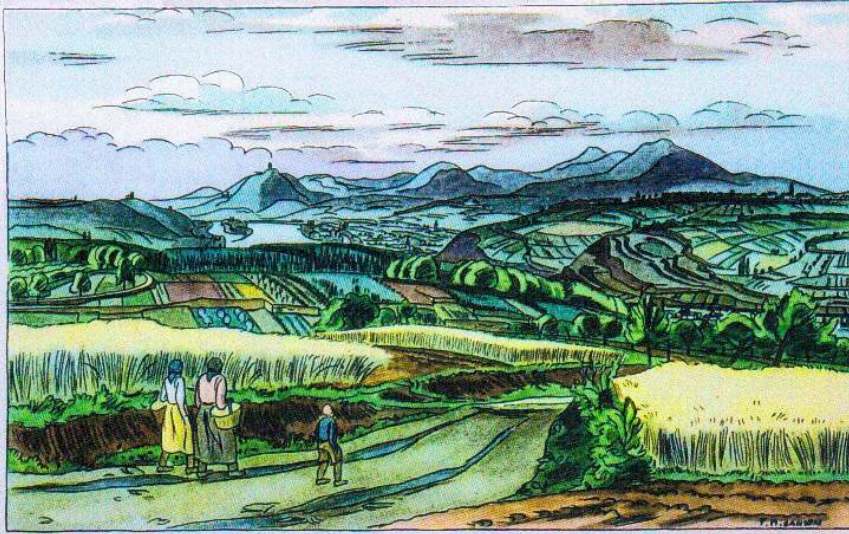
1941

54



1941

55



10

1941

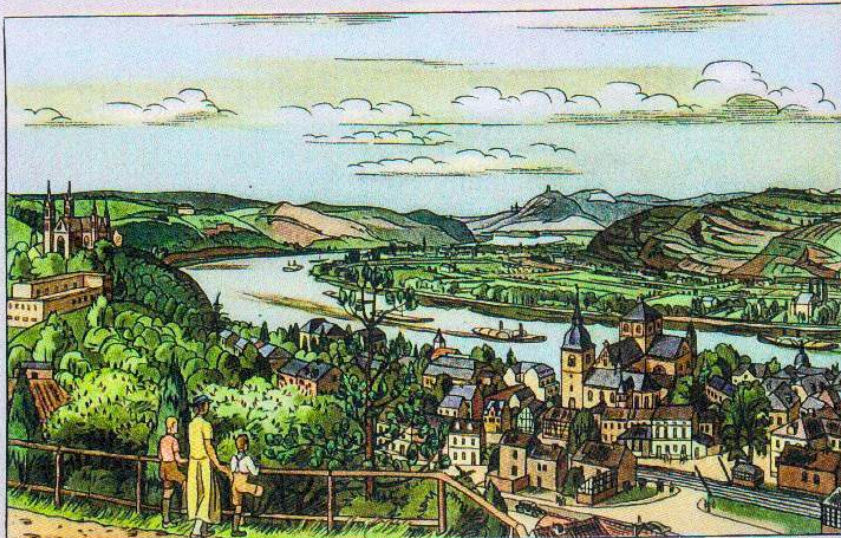
56



4

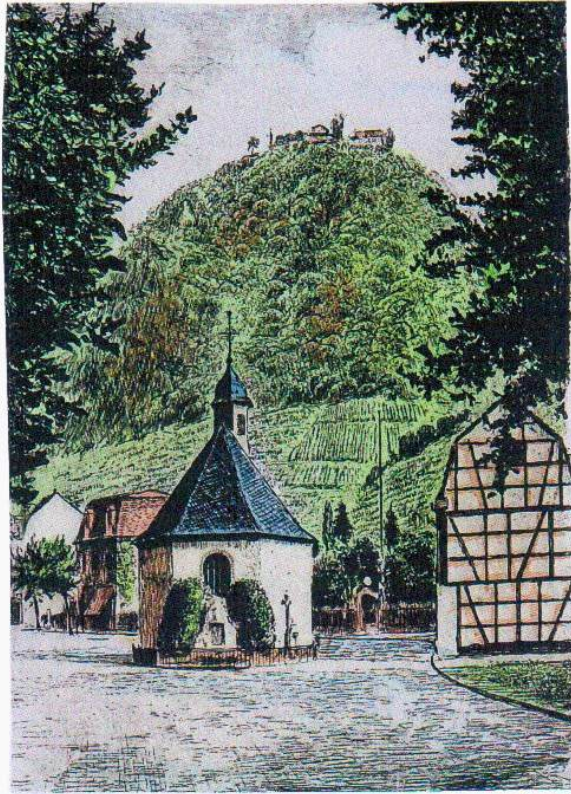
1941

57



11

1941



1980



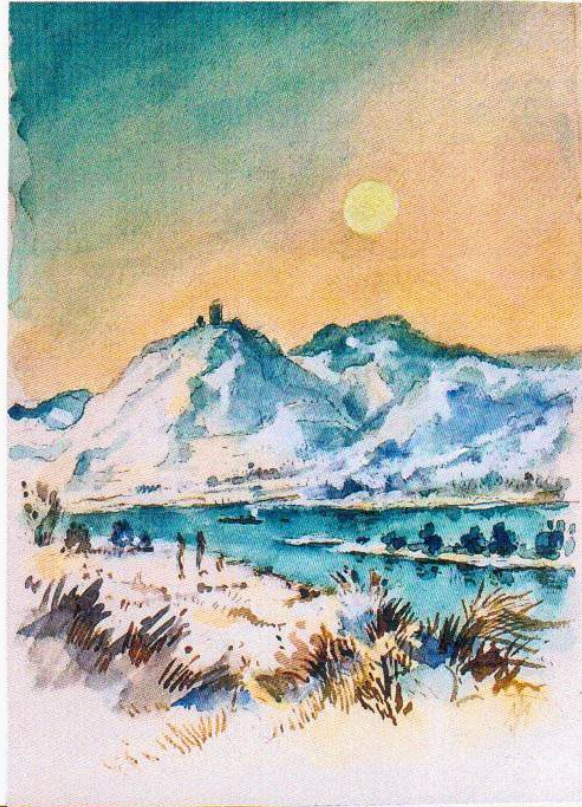
1950



1920

1970

61



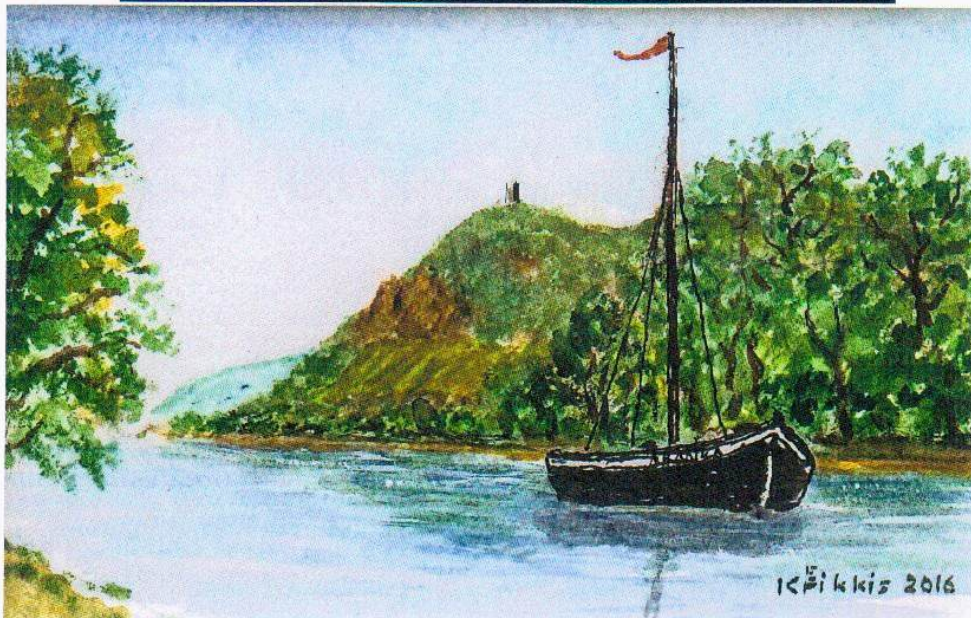
2015

62



2016

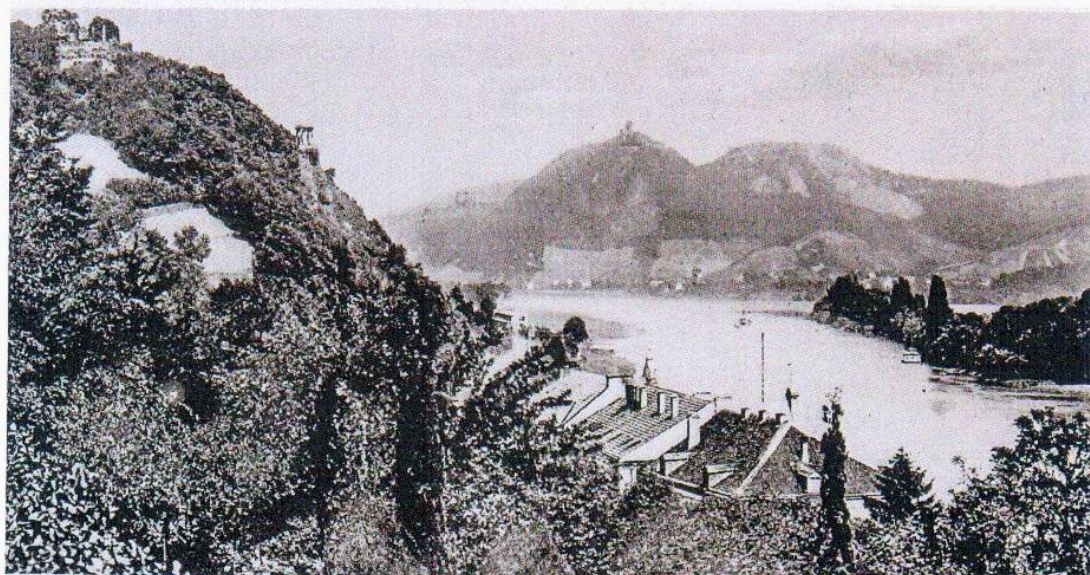
63



1977

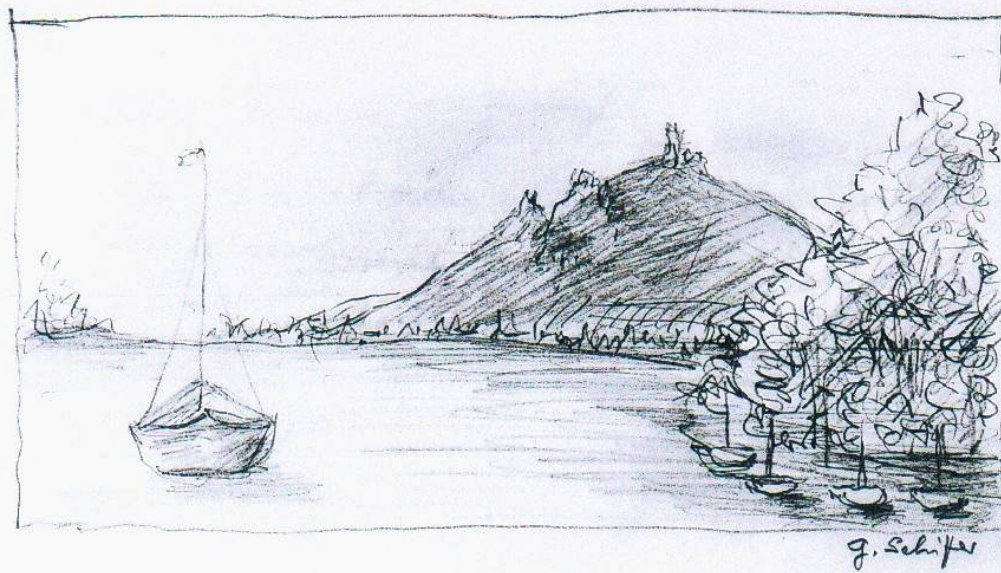


1910



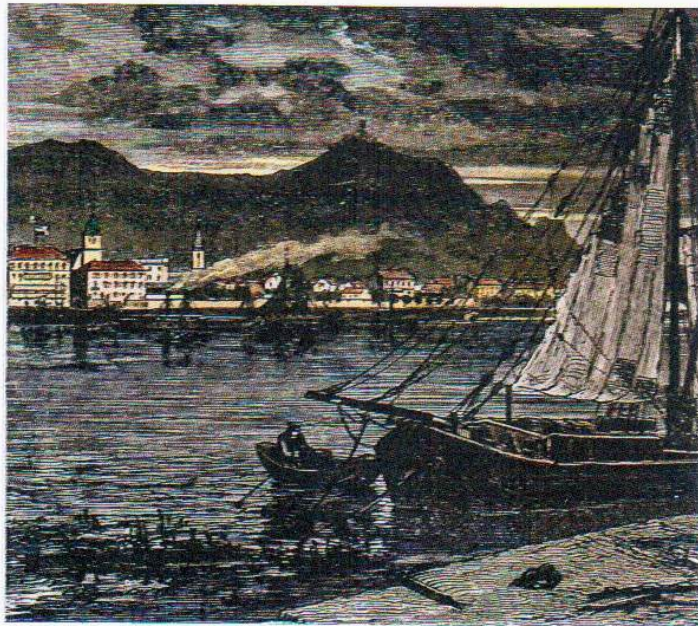
SIEBENGEbirGE UND ROLANDSECK

1995





1800



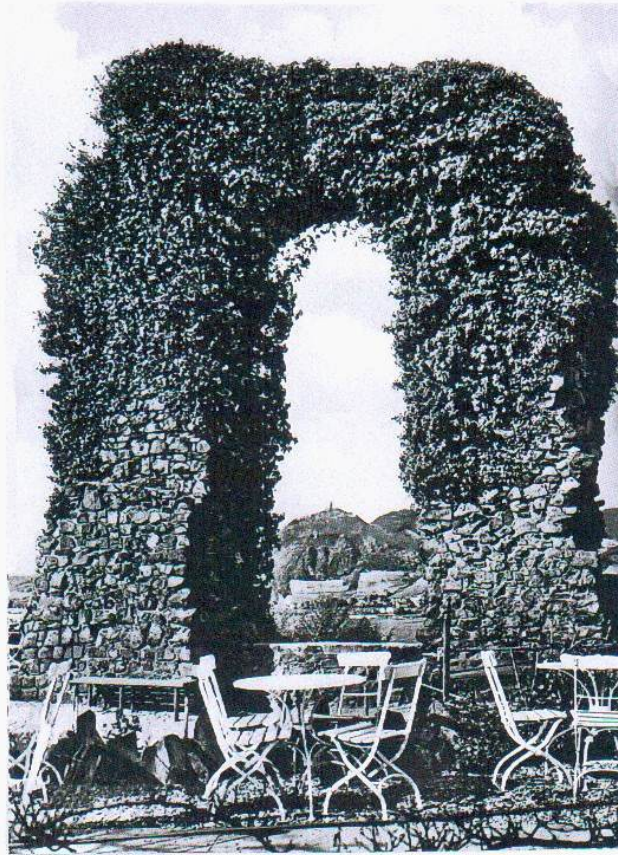
1890



1880

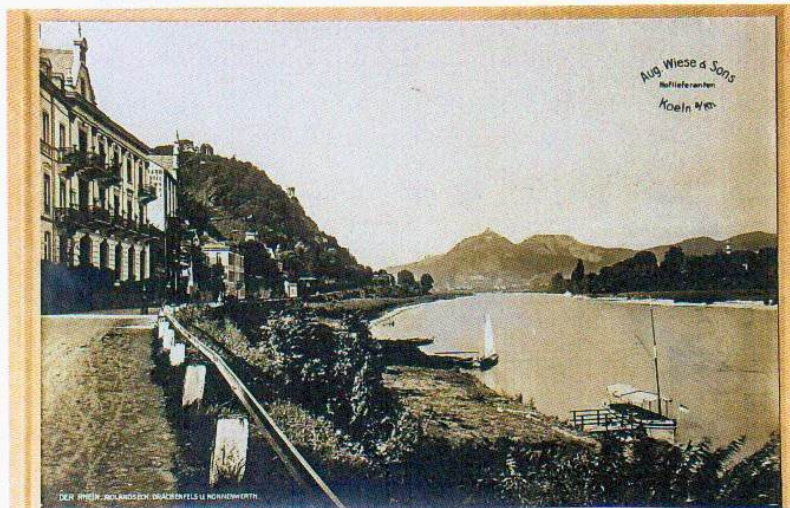
1930

70



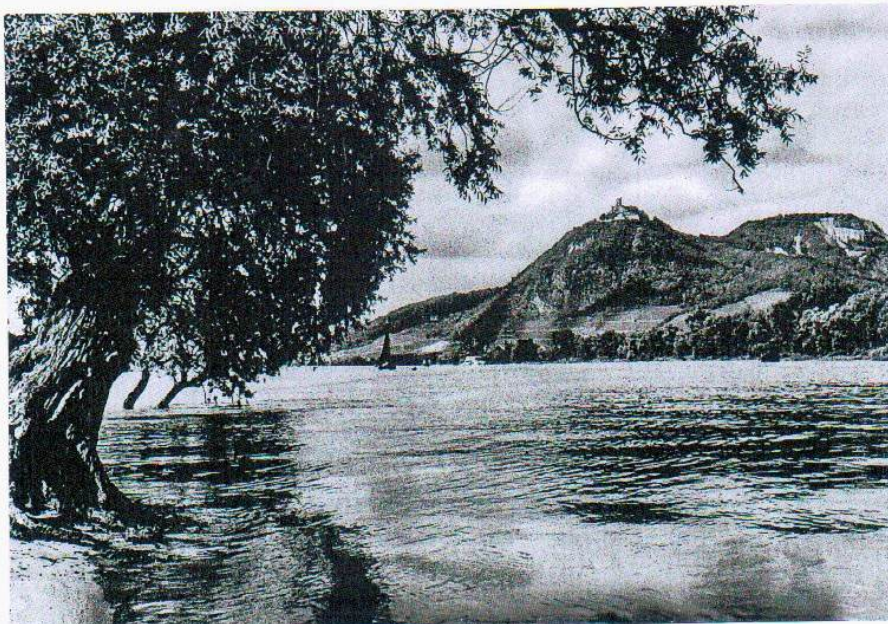
1910

71

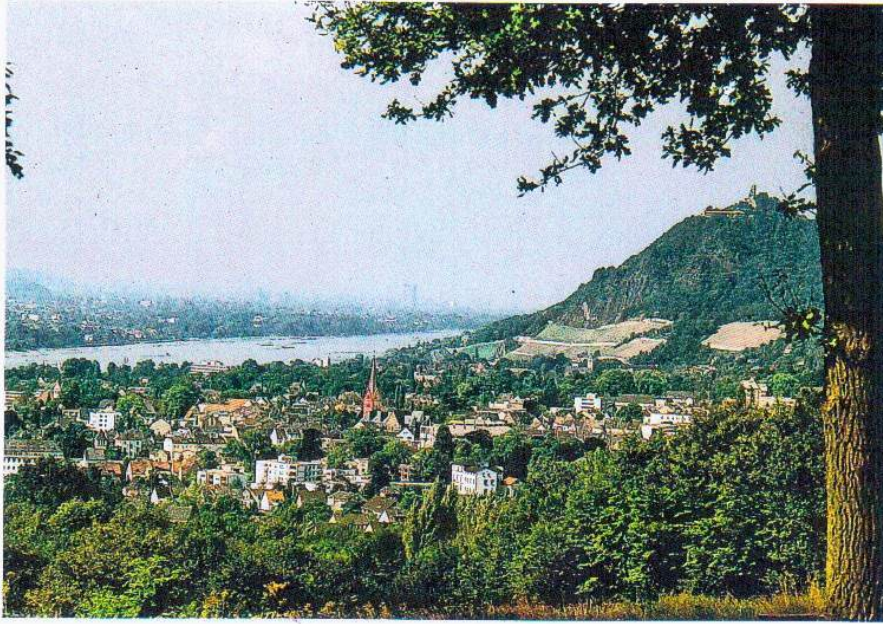


1952

72

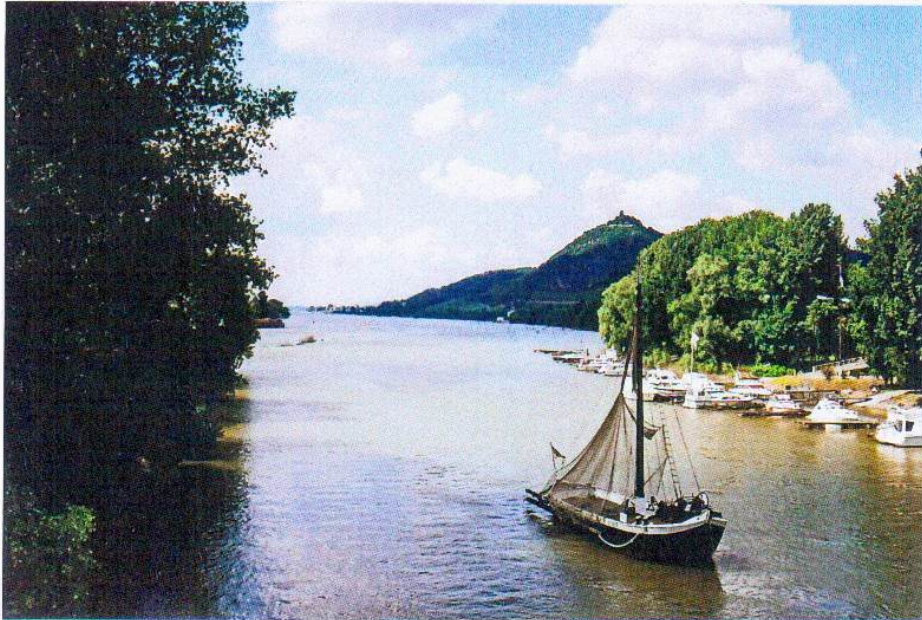


73



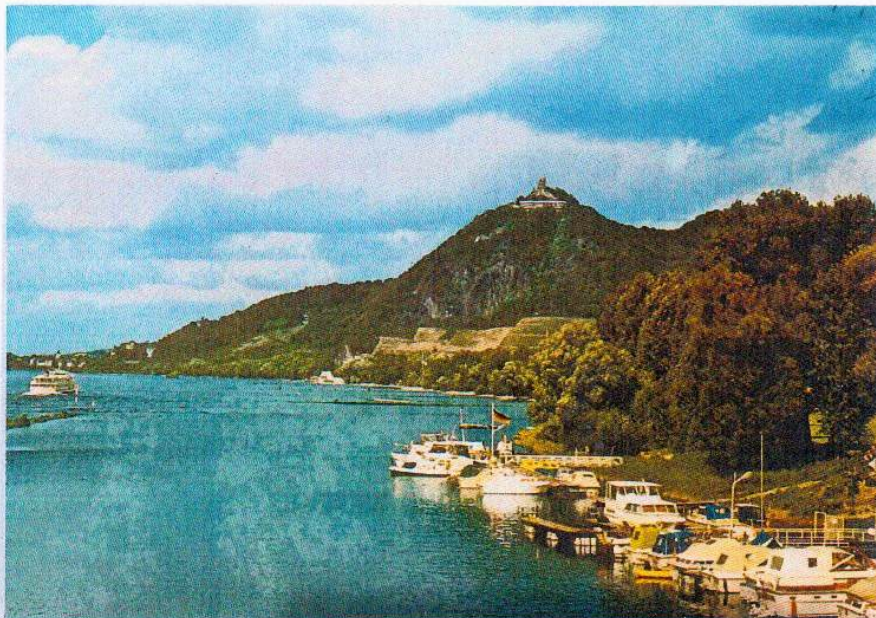
1955

74



1970

75



1990

76



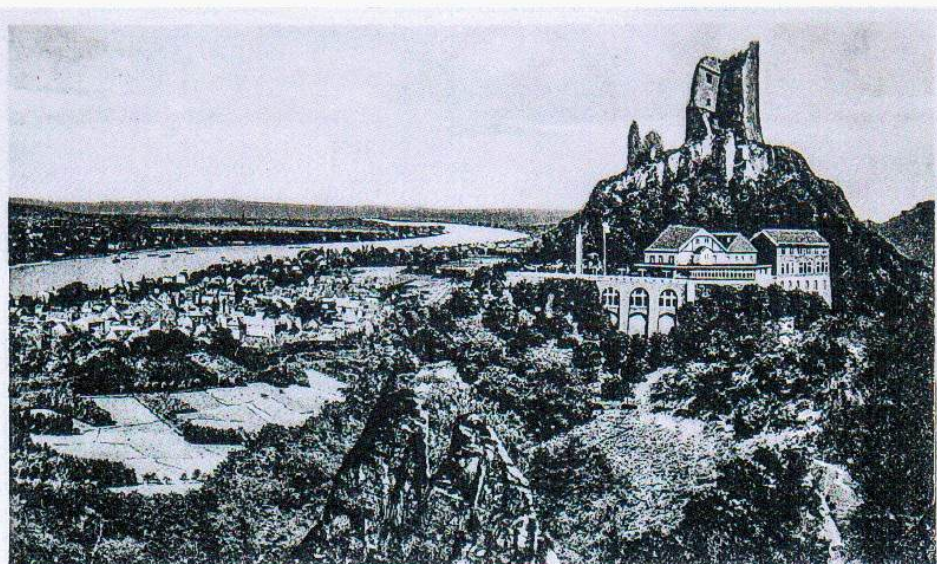
1960

77



1960

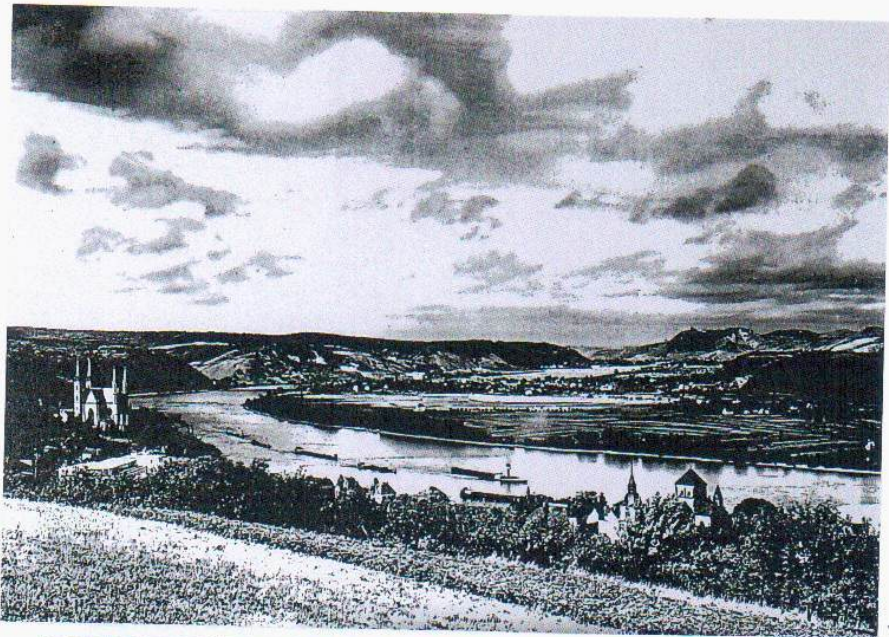
78



1890

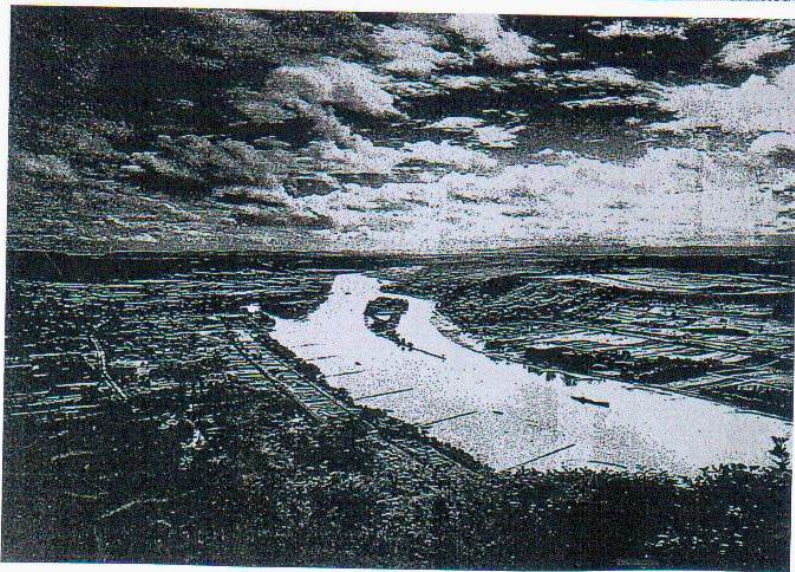
Der Drachenfels, die Perle des Rheins, 327 m ü. M., mit Königswinter

79



1934

80

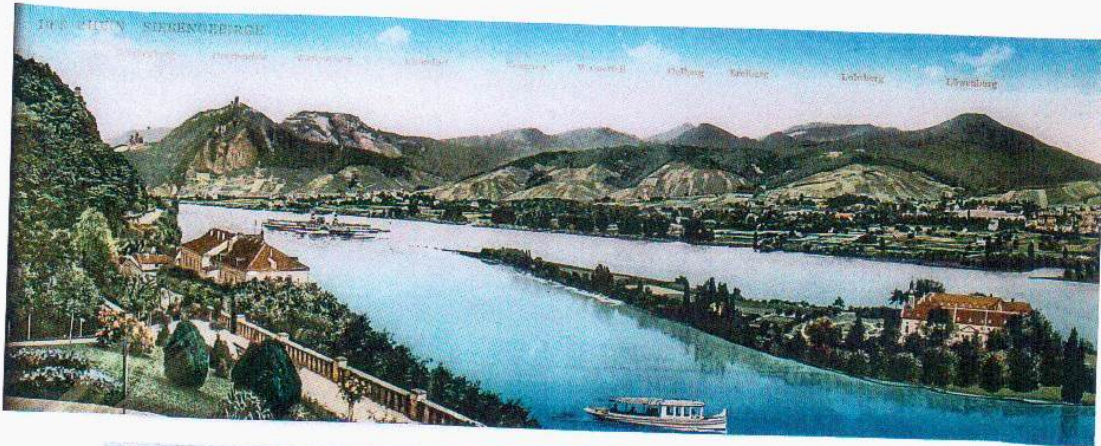


1934

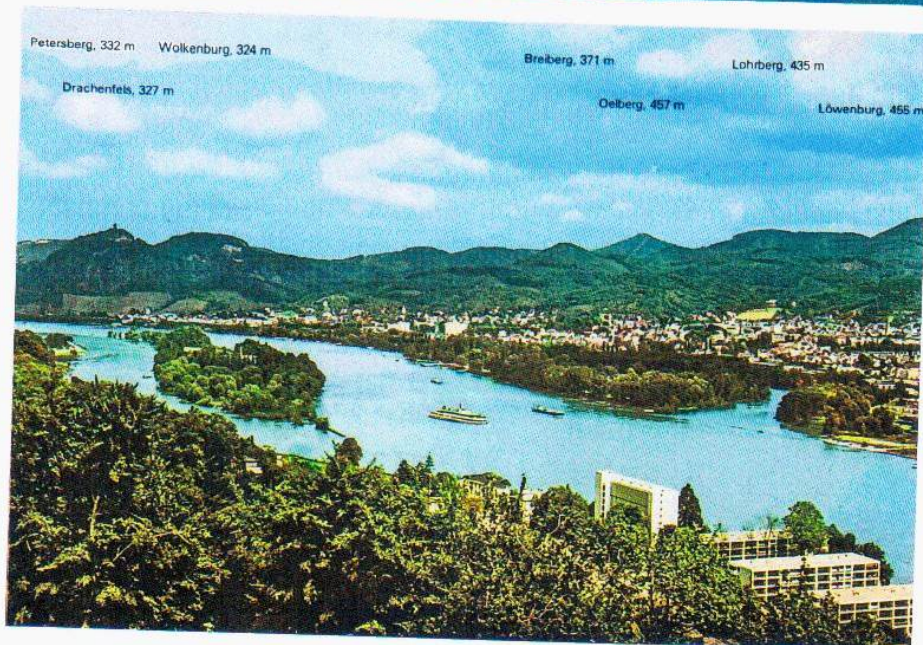
81



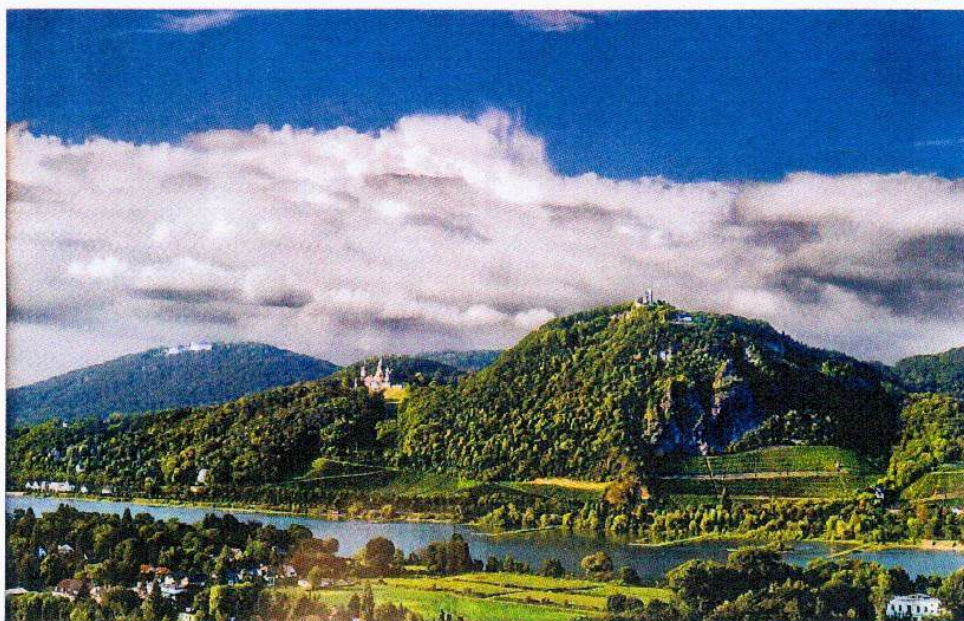
1934



1900



1960



2015